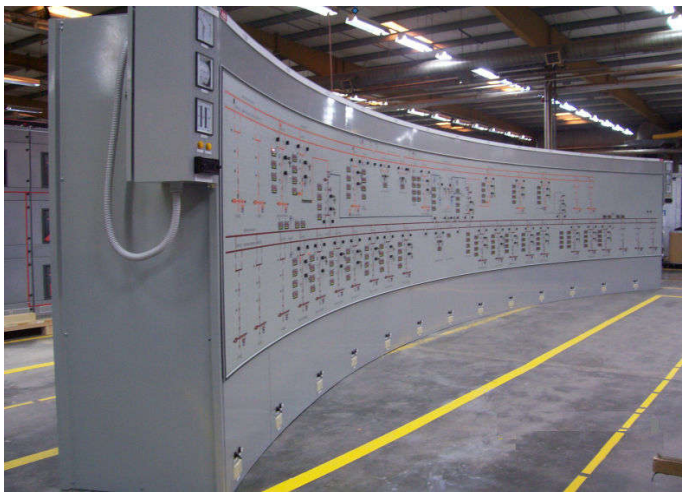


Mosaic Mimics

SECTION

10



- ❖ Mosaic Mimics & Tile System
- ❖ Different Types of Mimics
- ❖ Historic Major Works
- ❖ Black or Grey Tile Mosaic Mimics
- ❖ Engraved Mimic Panels
- ❖ Photo Anodised Aluminium Mimic Panels
- ❖ Vinyl Mimic Panels
- ❖ Gravoply Mimics
- ❖ Printed Mimic Panels
- ❖ Mosaic Mimic in Powder Coated Orange Steel Cabinet
- ❖ Applications Suitable for Mosaic & Mimic Panels

INDEX

Index page 02

Mimic Origins & History page 03

Benefits of using Mosaic Mimics page 04

- Mimic Panel Applications & Features page 04
- Environments Best Suited to Mimic Panels page 04
- Mosaic Mimic Panels vrs. Large Screen Displays page 04
- Mosaic Mimic Panel Life page 05
- Mosaic Mimic Panel Costs page 05

Different Types of Mimic Panels page 06

- 1. Black or Light-Grey Tiled Mosaic Mimics page 06
- 2. Engraved Mimic Panels page 07
- 3. Photo Anodised Mimic Panels page 08
- 4. Vinyl Mimic Panels page 09
- 5. Gravoply Mimic Panels page 10
- 6. Podwer Coated Mimic Panels page 11
- 7. Printed Silk Screened Mimic Panels page 12
- Colour Chart for Graphics page 13

Mimic Panel Materials page 14

Mimic Panel Application Uses page 14

Mosaic Mimic Tile System page 15

- The System page 15
- The Mimic (Graphics) page 15
- The Grid page 15
- The Tiles page 15

Images & Historic Works page 16

- Large Historic Mosaic Mimic Hong Kong Project page 16
- Large Historic Control Room & Mosaic Panel page 17
- Large Historic Control Room & Mosaic Hong Kong page 18
- Installation Large Historic Mosaic Mimic panel page 19

- Major Works 1 Historic Mosaic Mimic Projects page 20
- Major Works 2 Historic Mosaic Mimic Projects page 21
- Historic Works Ghana page 22
- Historic Works Zambia & Kuwait page 23

- ADDAVUE Panel Window Alarm Annunciators page 24
- Panel Components, Control Desk, BarGraphs page 25
- Panel Components, Operator Desks, Semaphores page 26

- Drawing: FlushFit Components in Mimic Panels page 27
- Mimic Factory page 28



Company History

Mimic Components was started in 1971 as a manufacturer of electronic mimic displays. Over the years the company built up expertise in other areas, including control desks, software and display electronics.

As a result of constant growth and success, and the many overseas contracts undertaken, it became necessary to split the company into two groups i.e. Mimic manufacturing and Components. This guarantees our patrons dedicated and personalised service in whichever department they chose to deal with.

Manufacturing Division - Mosaic Mimic Panels

Mimic offers a wide range of Mosaic Tiles (including an Aluminium Grid System). Apart from mosaics, their manufacturing also produce excellent photo anodised Aluminium face plates. The factory also boasts large bed computerised engraving facilities and fully equipped CAD facilities for their engraved mimics.

Mimic also pioneered the revival of rear engraved Perspex mimics using new materials which cut costs without compromising on quality. The factory also manufactures superior quality consoles which are aimed at the 'up' market segment geared towards prestige control rooms. Control desks are tailored to customers specifications and specifically made to house computer based systems.

Components Division

Components cc was born as a direct result of growing demands for specialised control components. The company is now able to accommodate clients with specific requirements in the area of operator interface (informing and warning). Mimic are leaders in LED Pilot lights and Filament Lamp replacements.

They are also one of the few companies nationwide who supply the original Mechanical Semaphores for older mimic panels. Besides supplying a wide range of good quality electrical and electronic components, Mimic manufacture a large range of big digit displays, alarm displays and alarm annunciators.



Fig. A shows the convenience of fitting monitors directly into our mosaic (Hong Kong airport bridge)



Fig. B shows the practicality of our tailor made console desks (rail control)

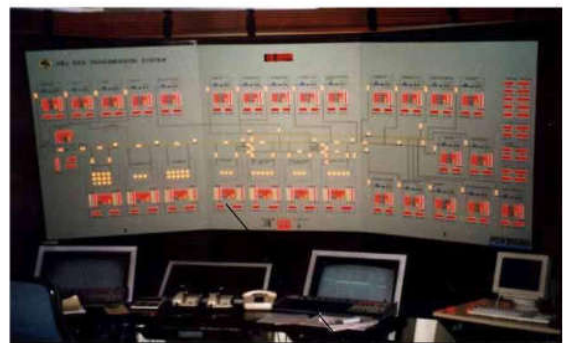
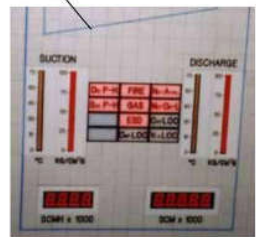


Fig. C shows a large mimic supplied to India with bar graphs, digital displays, status leds and alarm windows, all driven by modbus. This is part of a large project where four mimic panels will be updated by signals from central control via satellite link.



For Certain Applications Mimic Panels are still the best Option

Traditional large mimic panels are still often used for the below benefits, however, there are still many other applications where mimics in all types and sizes are practical and beneficial:

Mimic Panel Applications & Features

- Large high-voltage substation switching.
- Power station applications.
- Any situation in a remote area where computer technicians are not readily available for repair, service and maintenance.
- When power stations may need to execute a black start.
- Serial MODBUS system for driving mimics effectively becomes a large screen display.
- Non-mimic panel Projector type lamps have a short life span and are very expensive.
- Large screen displays commonly used for monitoring are not industrial quality & prematurely fail due prolonged and excessive use.
- No software license implications.
- Great for complex production lines.
- All operators in front of mimic can see alarms etc.
- Mimic panels have a long life span.
- Suitable for any layout, from building fire alarms, conveyor control or Power and water Reticulation and even highway management (see Hong Kong mimic panels).

Environments Best Suited to Mimic Panels

Mosaic mimic panels have an extremely long life (typically 20 to 30 years). Hence once installed they are better suited to a stable environment with minimal change. This is also due to their material composition consisting of electrical wiring and other delicate electronic components and devices.

Mosaic Mimic Panels vs Large Screen Displays

The trend of some users opting for large screen displays instead of mosaic mimic panels has been around for some time. However, traditional large mimic panels are still often preferred and used by operators for their varied applications, where mimics in all types and sizes, are considered more practical and beneficial. Despite the modern era, there are continued good and proven uses for mosaic mimic panels, particularly where large overviews are required. All projects are customized to suit requirements. Call us for a free quote.

Example:

In South Africa, Mimic Components received orders for three large mosaic mimic panels (in the order of 8 metres wide by 3 metres high) for older power stations. The customer had already tried utilising large screen displays. However, the operators still prefer working with mimic panels as power stations occasionally need to execute a black start. It is for this reason some operators stated that they could not get a power station up from dead, unless they have some form of physical mimic to start up with.

In light of this issue faced by many operators, Mimic manufacturing introduced a serial (MODBUS) system for driving mimics, so that they effectively become a large screen display, being directly driven from the SCADA system, which has overcome many of the objections that extra equipment is needed to drive the mimic.

If lamps are used (the projector type), the lamp life is very short and the lamps are very expensive. There is thus a high maintenance cost on lamp-driven systems.

For Certain Applications Mimic Panels are still the best Option

Mosaic Mimic Panel Life

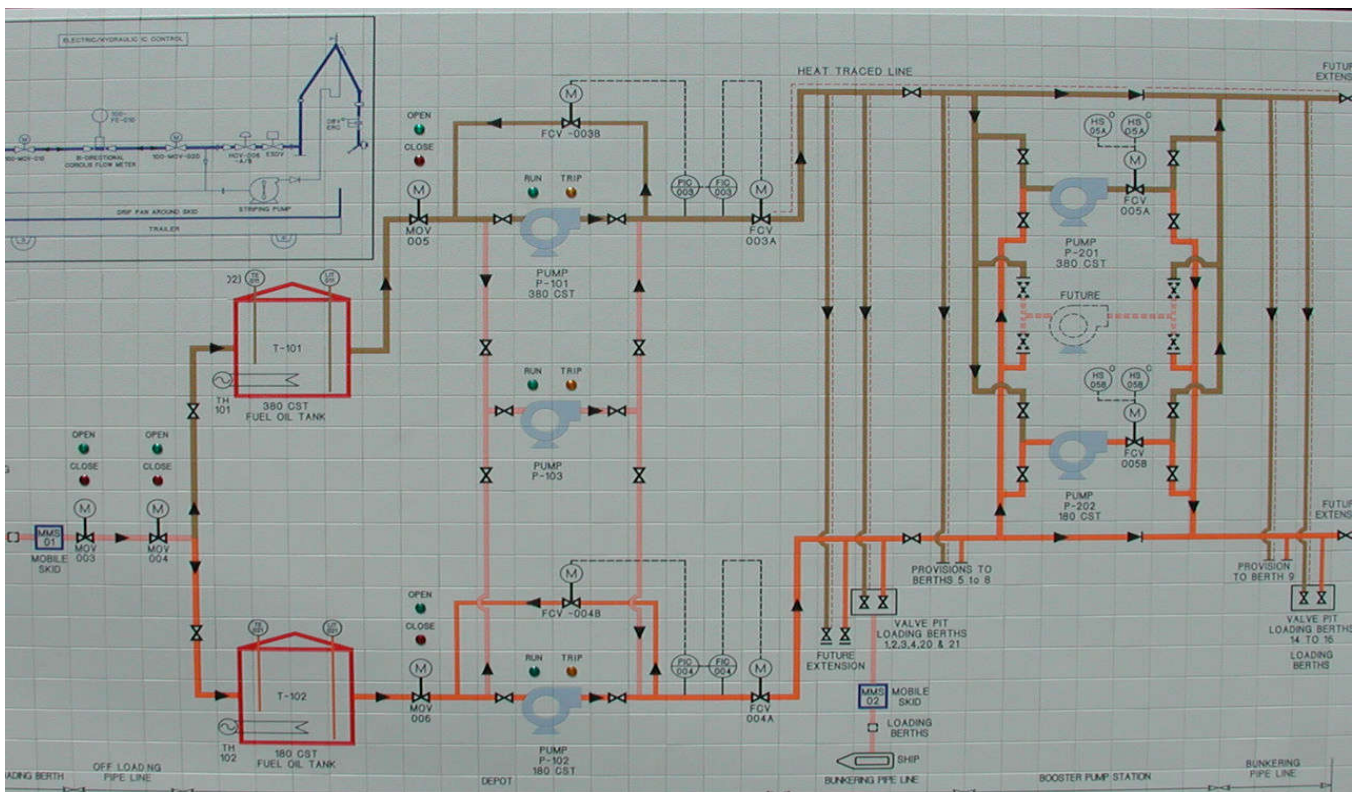
Mosaic mimic panels have an extremely long life, typically **20 to 30 years**. They are also easy to upgrade and are understood by operators. There is no doubt that a mosaic mimic panel still has an important part to play in the industry as operators can see the full picture at a glance which ensures safe switching and it can keep the powersupply and reliability level much higher

Example: In one application in South Africa, Tshwane (Pretoria) a customer with a large mosaic mimic panel uses it as a switch pre-planning guide. This is computer driven and prior to switching, the operators 'set the mimic' and the system prints out the switch arrangement, which is signed by the authority. The computer switching then takes place, following the large screen display. This has proved to be a very successful plan and switching guide for the operators.

Mosaic Mimic Panel Cost

Mosaic mimic panels from Mimic Components are surprisingly inexpensive and often have a price advantage over other systems.

Below image: South African Electric (Hydraulic) Control Mosaic Mimic Panel



Different Types of Mimic Panels

1. Black or Light-Grey Tile Mosaic Mimic Panels

Tile Colours: Black or light grey in colour. Mosaic mimic panels are the preferred choice of panels for larger stable systems that are unlikely to be moved or, where the graphics are prone to changing i.e. system modifications, upgrades and add-ons, in which case the tiles are easily modified. Mimic manufacturing specialises in unlimited sized mosaic mimic panels. The panels usually include bargraphs, digital displays, status LED's, alarm windows temperature monitors, all of which can be driven by Modbus if required.

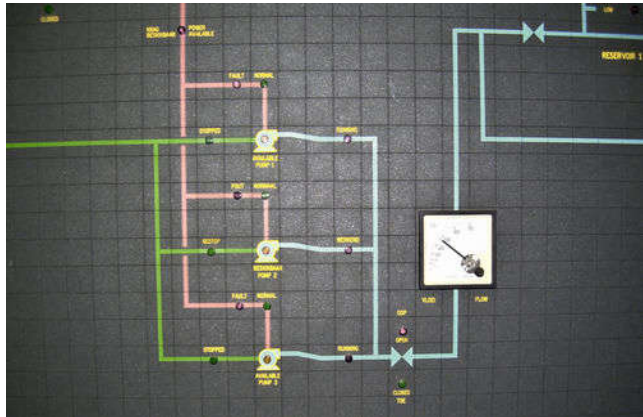
Powder Coated Black Engraved Enclosure



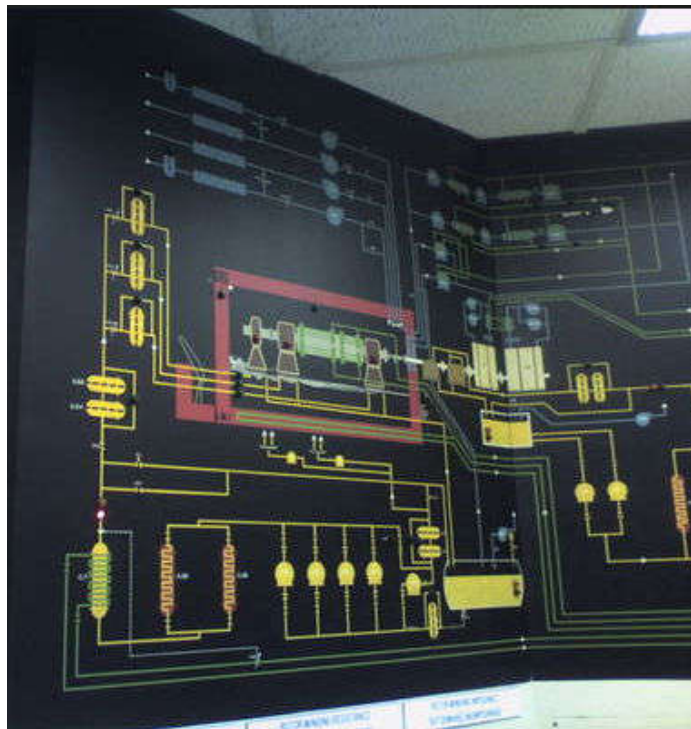
Powder Coated Black Engraved Enclosure



Large Black tile mosaic mimic panel with neat Joint



Black tile mosaic mimic panel with neat joint



Light Grey Mosaic. Mosaic tiles are available in sizes 24 x 24mm, 24 x 48mm and 48 x 48mm.

Different Types of Mimic Panels

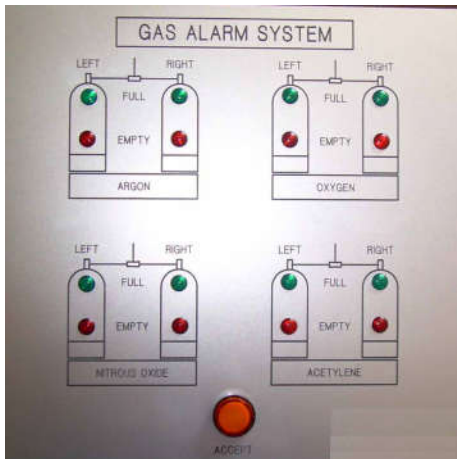
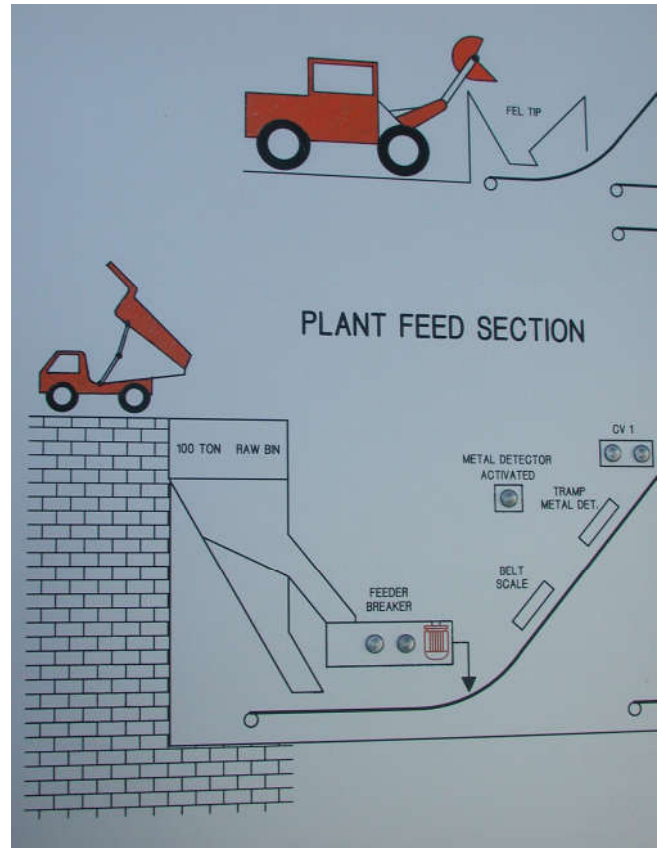
2. Engraved Mimic Panels

Since most mimic panels are one-offs, it is often more economical to engrave a panel. Engraved mimic panels are more durable than printing panels. Graphic engraving can be done on 3mm Aluminium or Acrylic sheets with the colour infill to suit. These types of mimics are produced with the use of large-bed computerised engraving facilities and fully equipped CAD facilities as part of their engraved mimics.

Rear Engraved Acrylic Mimics

On transparent material the mimic is often engraved on the rear side to protect the graphics. The front facing side should be a Matt surface to prevent reflection of the graphics.

Engraved text with colour detailed Graphics on a Crushing Plant mimic panel.



Engraved Gas Alarm System fitted to a mimic panel



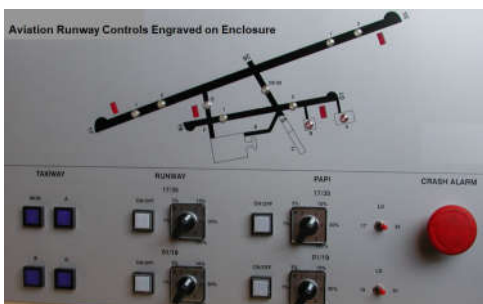
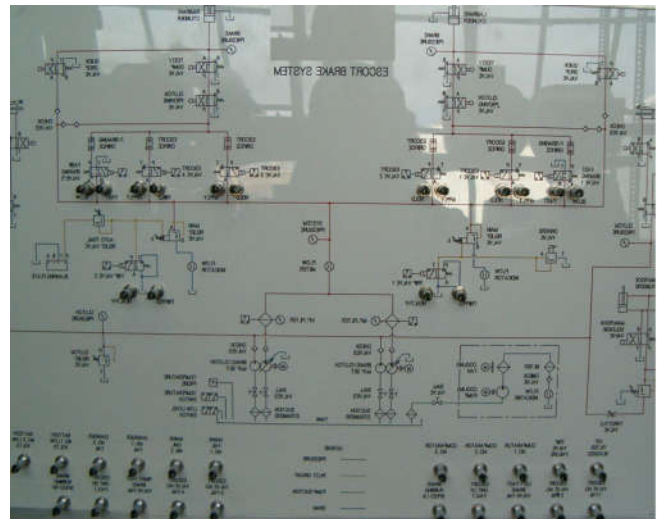
Engraved industrial metal labels



Engraved temperature with alarm system fitted with LEDs for a mimic panel

Rear Engraved Acrylic Mimic.

Below image shows protected mimic panel graphics



Engraved aviation runway controls fitted onto an enclosure

Different Types of Mimic Panels

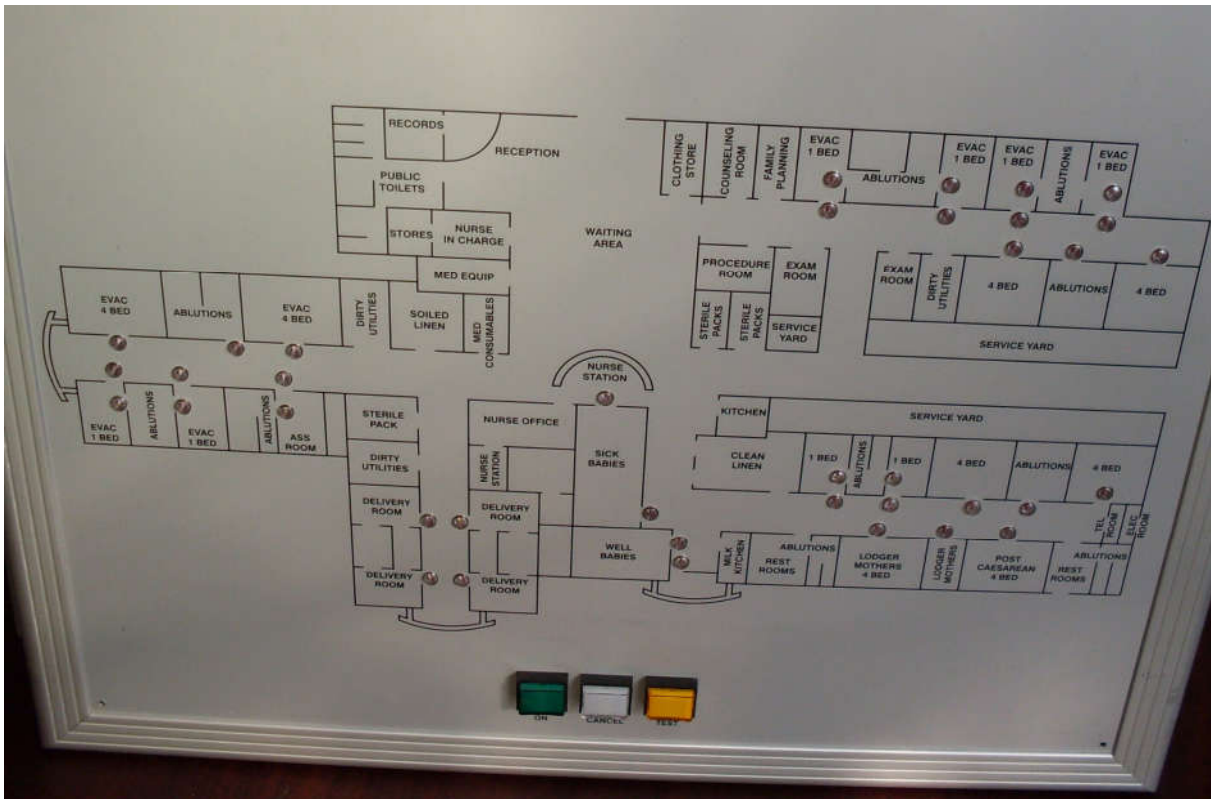
3. Photo Anodised Mimic Panels

Photo Anodising is a permanent printing process where the Graphics are embedded into the Aluminium prior to Anodising and is therefore very durable. These types of mimics are ideal for Nurse call systems and Security layouts. The Mimic layout is anodised onto the Aluminium using a photo-process. A wide range of colours are available for flow, units/tanks etc and the graphics can be colour coded if required. This option is excellent where fine definition is required. Standard Colours: Green, Orange, Red, Yellow, Gold, Bronze, Black and a choice of 3 Blues. Size: 900 x 500 mm Maximum. Thickness: 0.5, 0.9, & 2mm. Mimic manufacturing also produces excellent photo anodised Aluminium face plates. The hinged wall mount Alutech™ lockable enclosure looks good in any environment and depending on the size, the Graphics can either be engraved or Photo Anodised.



Photo Anodised Nurse Call mimic fitted into an ALUTECH™ Aluminium frame enclosure which is portable & lockable.

Large Photo Anodised mimic panel of a Children's Hospital: Ward & Delivery Rooms



Different Types of Mimic Panels

4. Vinyl Mimic Panels

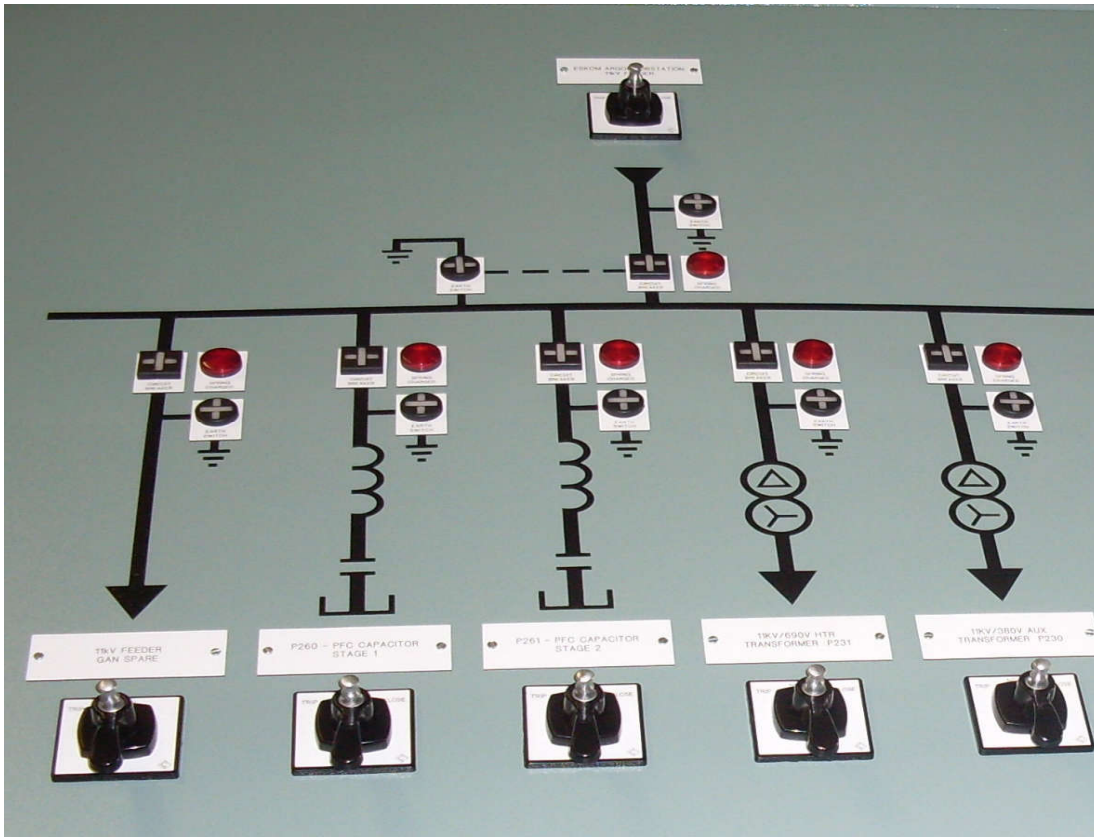
This type of application is applicable only to simple electrical distribution line diagrams on painted Metal panels. A special Vinyl is applied that has an approximate 20 year life span (the Vinyl used is a 15 or 20 Year Outdoor Rated Vinyl that, when applied indoors and without UV degradation, should give a life span of well over 20 years). The symbols are designed and cut on computers. Vinyl strips with symbols on them are then applied with precision to the Metal panels.

As this type of work can be done at the clients premises, Mimic Components offer their customers on-site Vinyl application training. This enables customers to immediately apply the product themselves to mimic layouts on panel doors without having to wait for an Artist to do it for them.



Industrial Vinyl Mimic Panel with Ammeter & Voltmeter Selector Switches Vinyl's in colours Brown & Green.

Industrial Vinyl mimic panel with transformer switches, modern square and round tile semaphores, black arrow markers and electrical symbols



Different Types of Mimic Panels

5. Gravoply Mimic Panels

Description: Gravoply comes in two different coloured layers. When the surface is engraved the colour of the bottom layer comes through. There are various colour combinations in which the Gravoply can be ordered in.

Size: 1200x600mm Maximum.

Thickness: 1.6 & 2mm

Colours: White/Black - White Surface/Black text

Black/White - Black Surface/White text

Silver/Black - Silver Surface/Black text

Red/White

White/Red

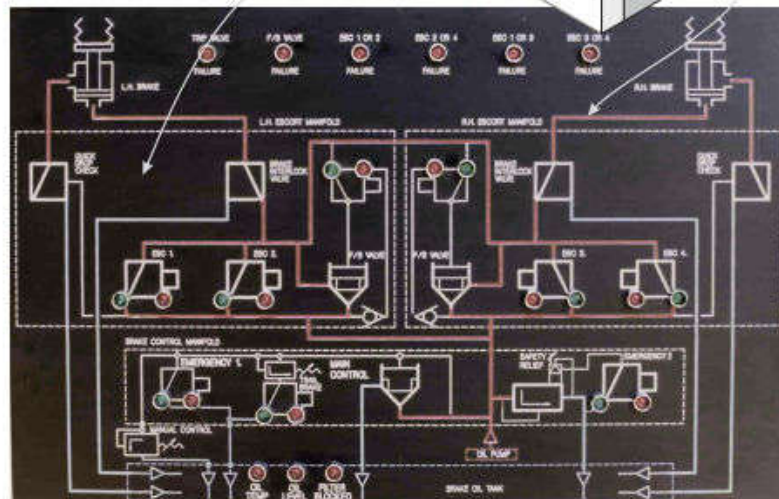
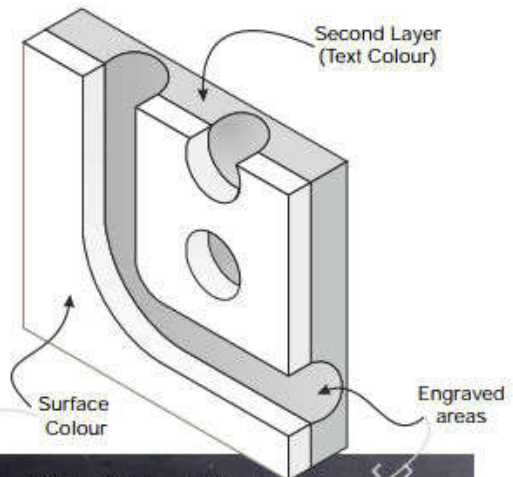
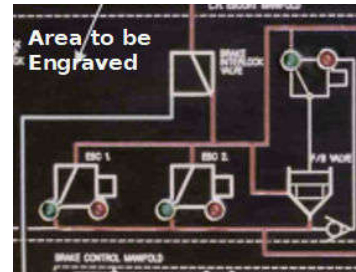
Green/White

White/Green

Blue/White

White/Blue

*Other combinations are available on request.

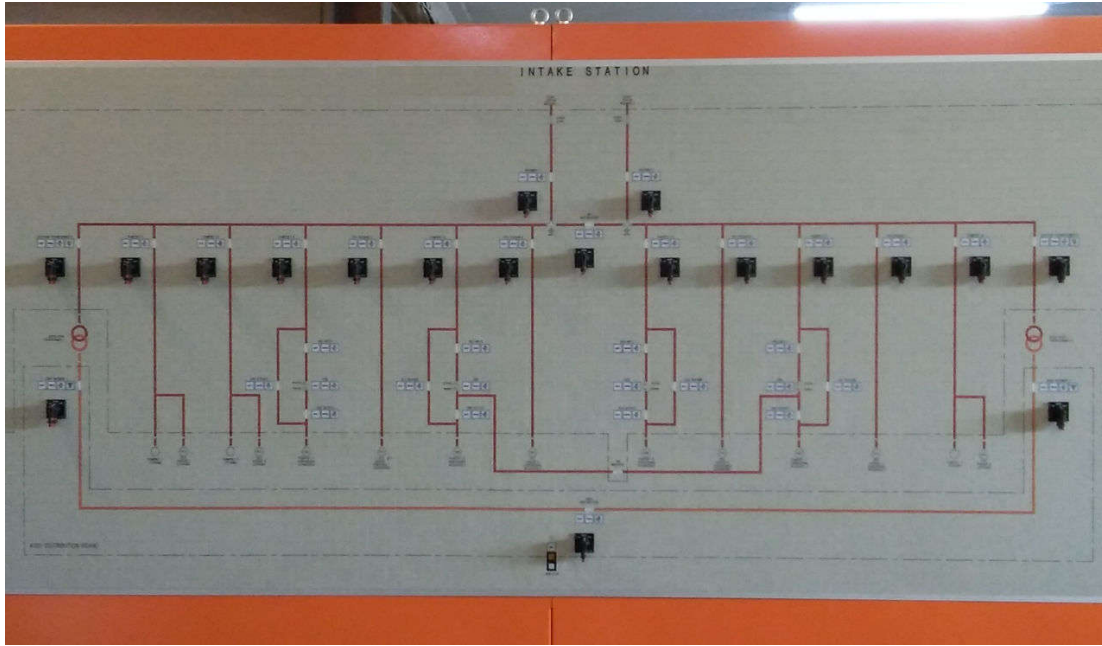


2-layered Gravoply in colours Red and Black engraved on a mimic panel mimic

6. Powder Coated Mimics

Mosaic mimic panel in a Powder Coated Orange Stainless Steel Cabinet. Stainless steel powder coated cabinets are available in colours Orange or Grey. They are typically the preferred choice for coastal areas and other areas where conditions are prone to humidity, rain/water and harsh elements that require robust enclosures.

Once completed, the mosaic mimic panels are fitted into the stainless steel cabinet. Made to suit most sizes.



ABOVE: South African Intake Station mosaic mimic in a Stainless Steel Orange Powder Coated Panel.



LEFT: South African Pumping Station in a Stainless Steel Orange Powder Coated Panel.

BELOW: South African Control Board in a Stainless Steel Orange Powder Coated Panel.



Stainless Steel Mimic Panels are ideal for for coastal areas and erratic temperature environments.

Different Types of Mimic Panels

7. Printed Silk Screened Mimic Panels

This type of process is created whereby the graphics can be printed onto Perspex sheets with a silk screening process. This is usually done on a 3mm Acrylic sheet.

Customers Panels

Description: Mimic manufacturing can Spray-paint, Silkscreen or apply a high quality vinyl onto customers powder coated panels, enclosures or control panels.

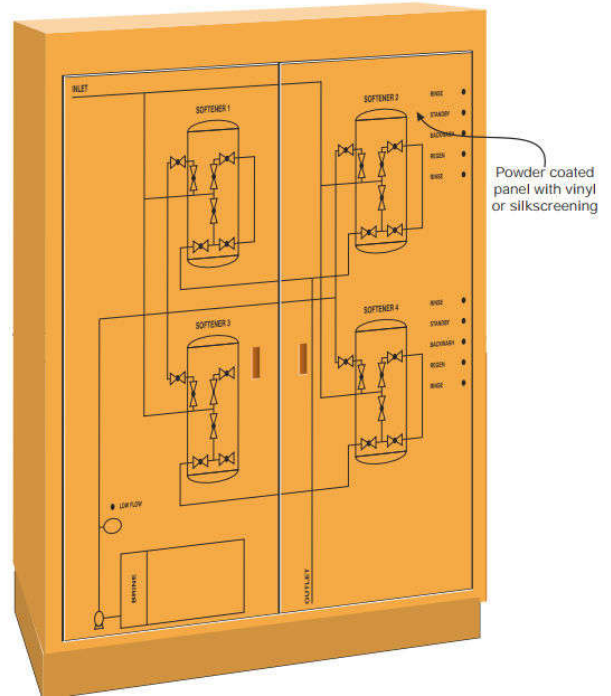
Other Mimics Silk Screened

(Suitable for any format of Mimic)

Description: Specific symbols can be ordered, and modifications can be done on site with little to no down time. More cost effective for mimics requiring standard symbols.

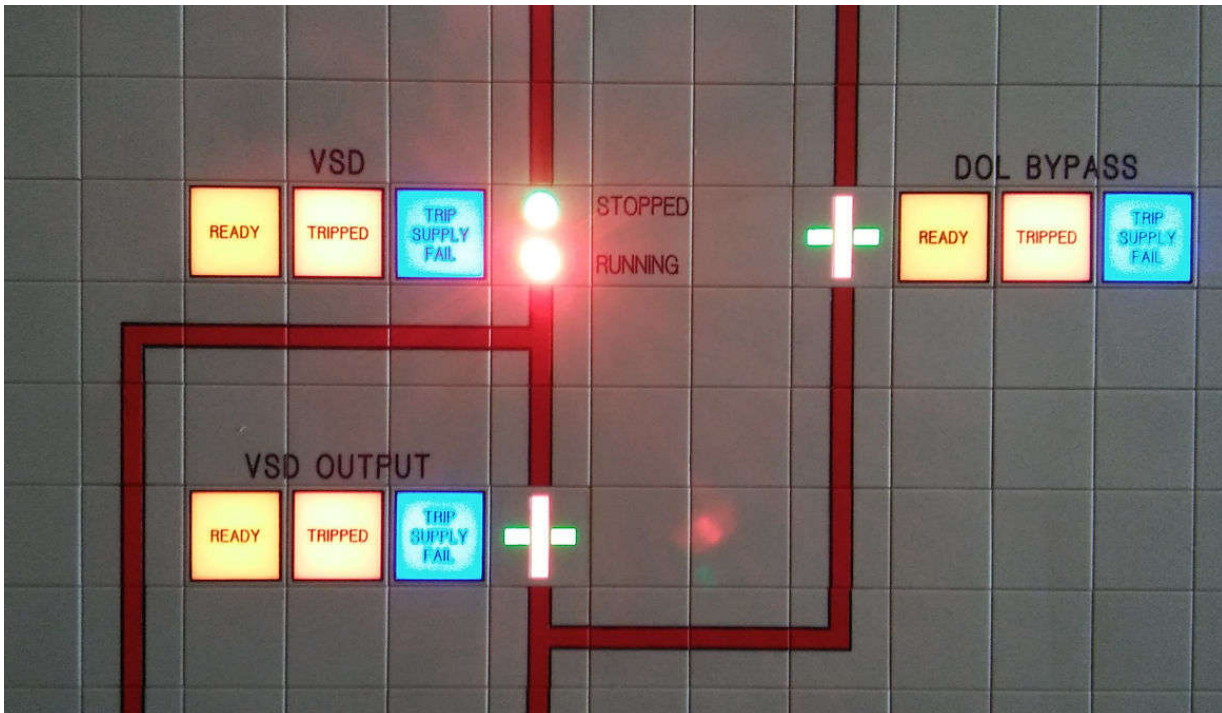
Size: dependent on application.

Cabinet: Powder coated panel with vinyl or silk-screening.




Panel Components

Below image of a mimic panel with flashing LEDs and modern Round/Square tile Semaphores



Colour Chart

With Colour NOTE - Monitor colours vary.
Obtain actual paint chart if accurate colours are required.

					
Golden Brown B13 P 464	Cream C66 P 1215 C	Buff B24 P 126	Dark Brown P 476 B03	Middle Brown P 462 B07	
					
Maize B32 P 130	Spectrum Orange P 165 B25	Lemon Yellow P 116 C54	International Orange P158 TPI 1-23	Golden Yellow B49 P124 RAL1003	
					
Dark Green 068 P 341	Green 064 P 355C	Forest Green D09 P 555C TPI-1-08	Grass Green P 576 H-14 TPI 1-91	Opaline Green E35 P 346C	Tea Green P 5757 C RAL6017 TPI-1-91
					
Garnet A06 P 202 C	Signal Red A11 P 192 TPI 1-25	Mid Pink P 230	Erika Violet P 205 C	Dark Violet P 259 F06	
					
Middle Blue 059 P 3015 C		Dark Blue 055 P 287	Azure Blue P 294 F05 TPI-1-47	Cornflower F29 P 284 TPI-1-45	
					
Black Black 6 CV	Smoke Grey F20 P 5425C		Medium Grey P 432 RAL7005 TPI-1-38	Siemens Grey Standard Tile P 454 RAL7032	Cool Grey P Cool Grey 3 C

Colour chart for Panel Artwork & Infills NOTE: (Highlighted Text are Mimic manufacturing reference numbers)
This chart shows the actual inks to be used, so the colours are exact. The Pantone reference number (eg: P 134C), is an approximation and is given to assist international customers as Pantone colour charts are available worldwide.
BS= British Standard **TPI**= Taiwan Paint Industry Association **RAL**=German Standard.

RAL colours can be specified. RAL7032 is the Standard Beige-grey tile colour and RAL7035 is another tile colour version of Grey. Rarely used but offered are colours Black 6CV and Charcoal.

Mimic Panel Materials & Mimic Panel Application Uses

Mimic Panel Materials

- Aluminium
- Acrylic (Perspex) sheets
- Painted Steel
- Stainless Steel for Marine applications



Orange Powder Coated Stainless Steel Cabinet



Grey Powder Coated Stainless Steel Cabinet

Mimic Panel Application Uses

- Water flow mimic panels
- Oil flow mimic panels
- Petro-Chemical flow mimic panels
- Industrial production mimic panels
- Operator start and stop mimic panels
- Water purification mimic panels
- Maize cleaning and extraction mimic panels
- Fire & Gas alarm mimic panels
- Air-conditioning mimic panels
- Temperature Refrigeration control mimic panels
- Substation mimic panels



Maize Cleaning Mosaic mimic Panel with multi-colour Graphics

The Mosaic Mimic has Advantages in that it can be Unlimited in Size, is Extremely sturdy and Individual Tiles can be changed After the Mimic has been completed.

The System

The "MASTERTECH" system is composed of modular elements. The graphic display is on tiles which are plugged into a grid constructed from interlocking long and short sections. As both tiles and grid are made from polycarbonate (Makrolon) which is a stable heat resistant material, they have matching expansion characteristics.

The Mimic (Graphics)

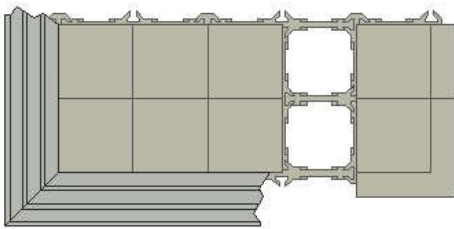
All artwork is computer generated directly from approved CAD drawings. This produces a superior quality end product exactly as per the CAD drawing. CAD information is kept on computer and extensions can thus be done exactly the same as the original thus keeping the quality of installation at a high standard at all times. All symbols, lines etc are totally engraved and the outline filled in black. This outline engraving improves the visibility, enhances quality and the engraving cannot be removed even with excess cleaning.

The Grid

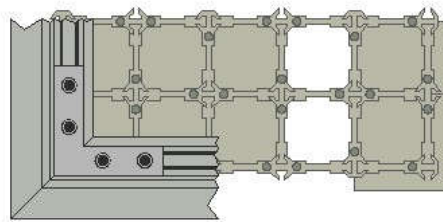
The grid is assembled from interlocking dovetailed sections with staggered joints. This system provides a rigid and robust structure for the mimic panel. The grid incorporates fixing holes for fitting of P.C. Boards and the likes. The clear rear surface of the grid frame is ideal for neat fixing of wiring and trunking etc. If parts are cut or removed to fit instruments, the mosaic grid can be replaced in small modules (2 x 4 tiles). Pre-punched strengthening channel is available for secure fixing with screws onto moulded holes. This is also ideal for fixing components onto the grid.

The Tiles

Tiles are available in sizes 24 x 24, 24 x 48, and 48 x 48mm in colours light grey and black. Tile attachment is symmetrical so they can be rotated through 90°. The tile surface is anti-glare. Tiles (including the first tile) can be removed from the front using a special tool. Tile construction is extremely precise and size does not vary by more than 0.03mm along any edge. The tiles fit into the Grid system extremely well after assembled. Rear illuminated tiles are available in single section, double section and triple section illumination. (E.g. Run, stop and trip in 1 tile). Suitable for any layout, from building fire alarms, conveyor control or Power and water Reticulation and even highway management.



TILE: Grid and T-Bead (Front)



TILE: Grid and T-Bead (Rear)

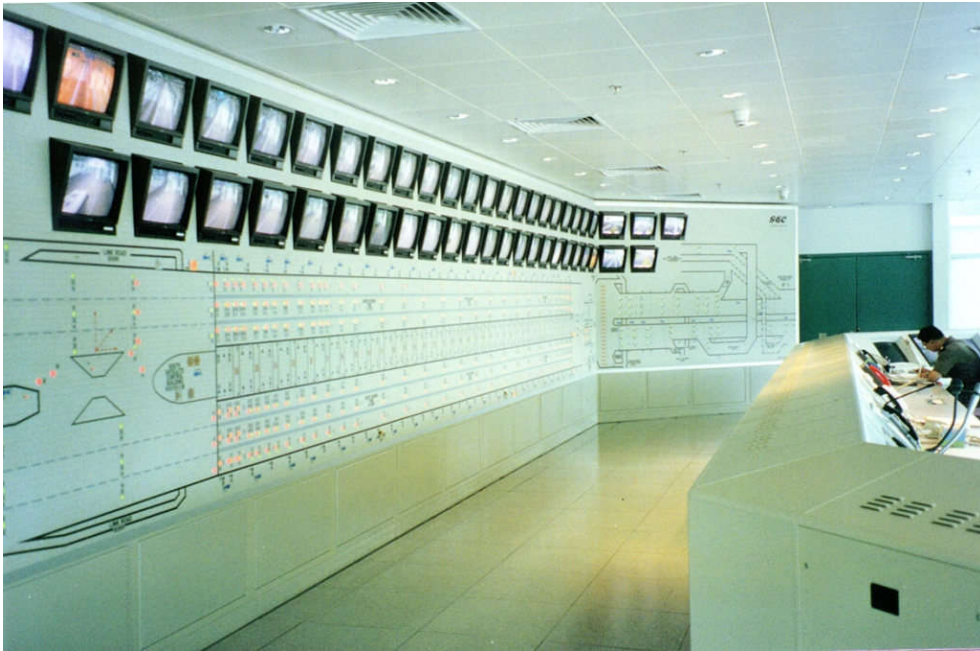


TILE: Tile Terminal



Panel Wiring

Historic Projects of Large Mosaic Mimic Panels



Control Room at Yuen Long Tunnel Hong Kong. Job by GEC & Mimic Components.



Mosaic mimic panel of the route to the Hong Kong Airport Project 1996-1997.



Control Desks with Console and Mosaic Mimic Panel of Route to Hong Kong Airport 1996-1997



Control Desks with Console and Mosaic Mimic Panel of Route to Hong Kong Airport 1996-1997

Site Installation of Large Mosaic Mimics



Hong Kong Mimic project 20m x 2,6m being installed at Yuen Long Tunnel. This large mimic was delivered in parts fixed to sectioned frame and assembled on site. The picture shows ease of joining sections done by a local worker with basic tools. The mimic was pre-wired with 2,000 LEDs wired to the serial driver cards fitted to each section.



Removing a section of the mimic. This is also easy to do with simple tools and local labour. The support frame (grid) can be changed and made good as required with instructions available on request.

**STATEMENT OF MAJOR WORKS SUCCESSFULLY CARRIED OUT
BY MIMIC CRAFTS (PTY) LTD**

We have completed over 2000 mimic panels, the list below is just the large ones.

Note! Escom is the national electrical supply authority for South Africa.

(We have completed over 20 medium mimic panels for them in addition to those listed below).

FOR WHOM DONE	NATURE OF WORKS	YEAR COMPLETED
ESCOM GEORGE	80m sq. Electrical Distribution Mimic	1980
ESCOM SIMMERPAN	100m sq. Electrical Transmission Mimic	1981
ESCOM BELVILLE	113m sq. Electrical Distribution Mimic	1982
BBT (ESCOM MATIMBA)	60m sq. Electrical Transmission Mimic	1983
BBT (SOWETO)	100m sq. Electrical Distribution Mimic	1984
ESCOM KIMBERLY	130m sq. Electrical Transmission Mimic	1984
ALUSAF RICHARDSBAY	18m sq. Mimic	1990
JCI (GOLD MINE)	Various	1980
DE BEERS DIAMOND MINE	Various	1980
WESTERN DEEP GOLD MINE	60m sq. Mimic Ventilation & Distribution	1990
CITY OF BLOEMFONTEIN	80m sq. Electrical Distribution Mimic	1990
GMB ZIMBABWE	PLC Mimic System	1994
CITY OF DURBAN	195m sq. Electrical Distribution Mimic	1994
GMB ZIMBABWE	PLC Mimic System	1995
CITY OF JOHANNESBURG	22m sq. Electrical Transmission Mimic	1995
CITY OF DURBAN	75m sq. Ext. to Existing Elect. Mimic	1995
ABB	25m sq. Cape Town	1995
STEWART SCOTT CONSULTING	Mimic with PLC Zimbabwe	1996
GEC (HONG KONG)	3 Large Panels for Airport "Core" Project. ADB Panel is 4.6m high x 20m wide, plus 2 other Panels of Approx 2.5m high x 20m	1996-1997
SOLARI ENG. (HONG KONG)	Panels for Tsuen Wan, & Sui Ho Wan Sewerage Works and Also Government Flying School.	1997
VL AUTOMATION (HONG KONG)	Mimic/PLC Panel for Yuen Long Tunnel.	1997
GEC (HONG KONG)	Mimic Panel for Yuen Long Tunnel. (20m long)	1997
FOXBORO (AUSTRALIA) FOR INDIA	3 Mimic Panels (Each 5m x 2m) with Modbus Instruments and Indications For Gas Authority Of India. Starting August	1999

STATEMENT OF MAJOR WORKS SUCCESSFULLY CARRIED OUT

We have completed over 2000 mimic panels, the list below is just the large ones.

Note! Escom is the national electrical supply authority for South Africa.

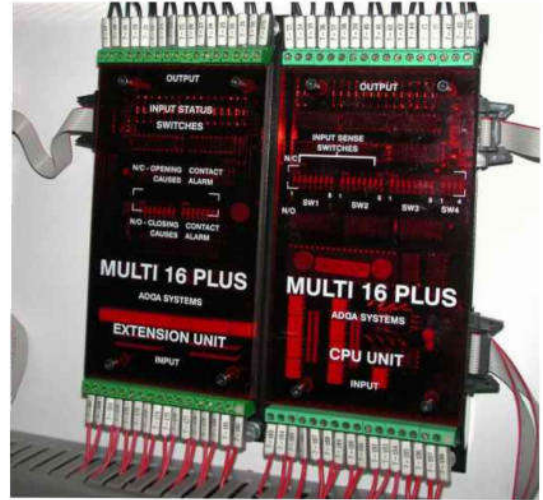
(We have completed over 20 medium mimic panels for them in addition to those listed below).

FOR WHOM DONE	NATURE OF WORKS	YEAR COMPLETED
FOXBORO GA AUTHORITY	3 MIMIC PANELS (Each 5m x 2m) with Modbus instruments for Gas Authority (started August)	1999
MALISCO (MIDDLE EAST) FZE	Fire & Gas Mimic Panel Systems For Adnoc (5 sets of Panels)	started July 2002
ELECTRICAL & MECHANICAL Co.	Oil storage Mimic Panel	Dec 2002
TECHNO AUTOMATION	Waste treatment Mimic Panel C/w alarm annunciator	March 2003
BLOUBAN CONTROL SYSTEMS	Mimic Panel & Alarm Annunciator Mina Zayed Seaport Pump Station	April 2003
EMIRATES TRADING AGENCY	Supervisory Mimic Panel for Adu Dhabi	May 2003
ELECTRO MECHANICAL Co.	Fodder Farm pump station Mimic Panel x3	May 2003
SWITCHBOARD CONTROLS Co.	Old Doha Pump Station Mimic Panels x2	May 2003
MALISCO (MIDDLE EAST) FZE	Hawally & Doha Pump Station Mimic Panels for Ministry of Electricity & Water Kuwait	Sep 2003
MALISCO (MIDDLE EAST) FZE	ESD Matrix Panels for Train 6 & 7 BAB Field Expansions	April 2004
MASSEERA	Control Systems Mimic For Jebel Dhana Airport	Nov 2004
ABB EGYPT	EI Adlia Mimic	June 2005
KUWAIT CONTROLS	Al Khiran Pearl City Mimic	July 2005
MES SEG	Adgas Power System upgrade ABU Dhabi Gas Liquefaction Co LTD	July 2005
MASSEERA	DHOW Harbour Market Water Supply Mimic	Oct 2005
CIMAC	South DOHA Station Drainage affairs	

Kuwait Water Tower Multi-16 Units with ADDAVUE Displays



Rear view of ADDAVUE 16-way display units



Multi-16 CPU & Expansion Units. Mounted on chassis on side of Control Panel



ADDAVIEW / ADDAVUE MODULES This mounting arrangement can save Panel length.



ZAMBIA COPPER MINE Multi-16 with timer modules all in wall mounting Alutech box.

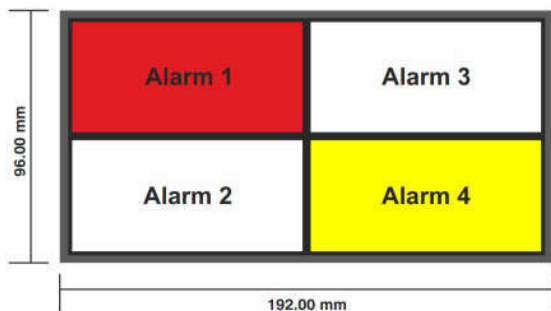
Locally Manufactured Components Alarm Annunciators : ADDAvue Series A/B



LED backlit Indicator System for use with PLC, MULTI 16 or AEM4. Tri-colour indicator windows, Modbus version also available.

- Colour selection by jumper or software (Red/Green/Amber)
- Removable terminals
- User laser printable indicator window inserts
- Fully solid state - life expectancy > 150 000h
- Standard DIN size bezel (96x192) & cutout size (90x183)
- Common negative & common positive versions
- Built in lamp test

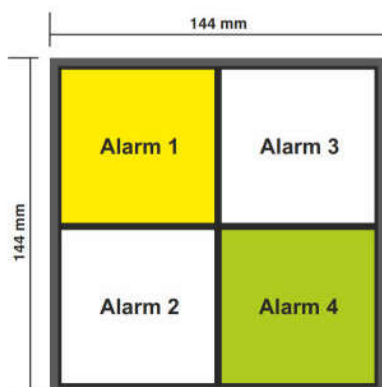
ADDAVUE Series A (base module 192x96) ADDAvue-A4 (96x48)



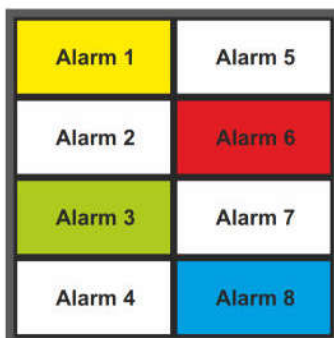
ADDAvue-A8 (48x48)

ADDAvue-A16 (48x24) ADDAvue Series B (base module 144x144)

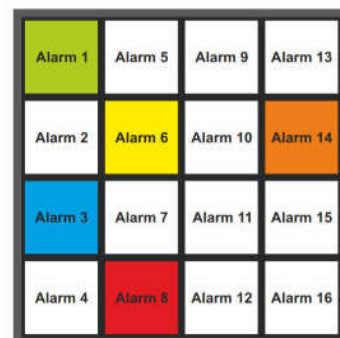
These units have 7 colour illumination by Long Life LED. (Colours are selected by dip switch)



ADDAvue-B4 (72x72)



ADDAvue-B8 (72x36)



ADDAvue-B16 (36x36)

Mosaic Mimic Panel Displays & Components



Fig. D Original Mechanical Semaphores for Older Mimic Panels



Fig. E Baragraph Mosaic Mimic Panel with multiple Bargraphs

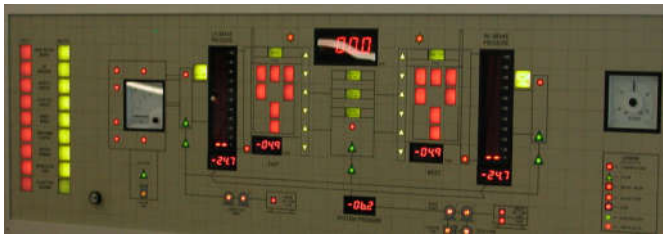


Fig. F Temperature Controllers for Winder Motors Armcoil Armature Re-winder / Mines. Emergency Switches, LEDs, Tile Semaphores



Adda 8 Alarm Annunciator

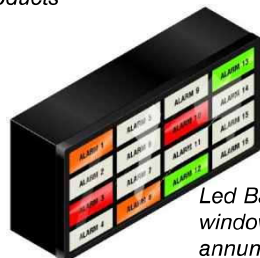


Elite Semaphore

Fig. C shows some of the many components we have in our range of products



Modbus Instrument System



Led Backlit Alarm window for Alarm annunciator

Mosaic Mimics Utilised with Control desks



Fig. A shows the convenience of fitting monitors directly into our mosaic (Hong Kong airport bridge)



Fig. B shows the practicality of our tailor made console desks (rail control)

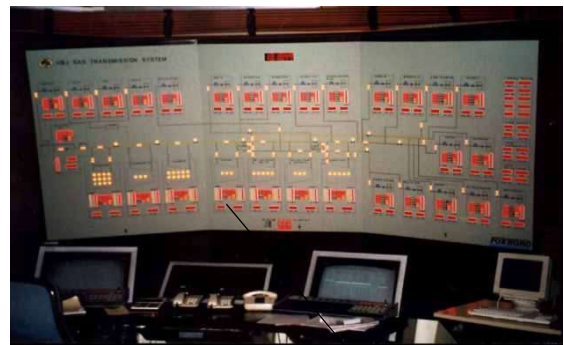
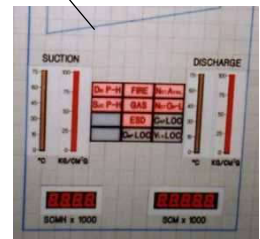


Fig. C shows a large mimic supplied to India with bar graphs, digital displays, status leds and alarm windows, all driven by modbus. This is part of a large project where four mimic panels will be updated by signals from central control via satellite link.



Mosaic Mimic Panel Displays & Components

Mosaic Mimics Utilised with Control desks

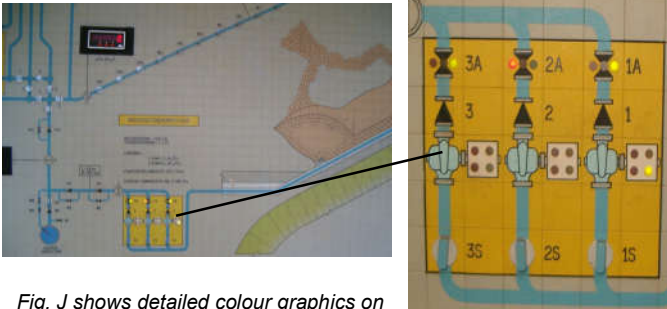


Fig. J shows detailed colour graphics on a mosaic mimic panel for a South African Pump Station.



Fig. G shows the convenience of operating larger mosaic mimic panels with operator control desk & monitors.



Fig. K shows a small mosaic mimic panel fitted into a single operator control desk.



Fig. H shows the combination larger mosaic mimic panels linked to, monitored and controlled by operators from control desks.

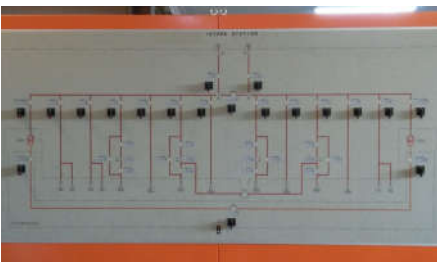


Fig. L shows a mosaic mimic fitted in an Orange stainless steel powder coated panel enclosure for a South African Intake Station.



Led Indicators for panels



Panel Meters

電站 محطة طاقة

power station

Versatile grammatical fonts for mosaic mimics



Solid state tile semaphores for modern mosaic mimics

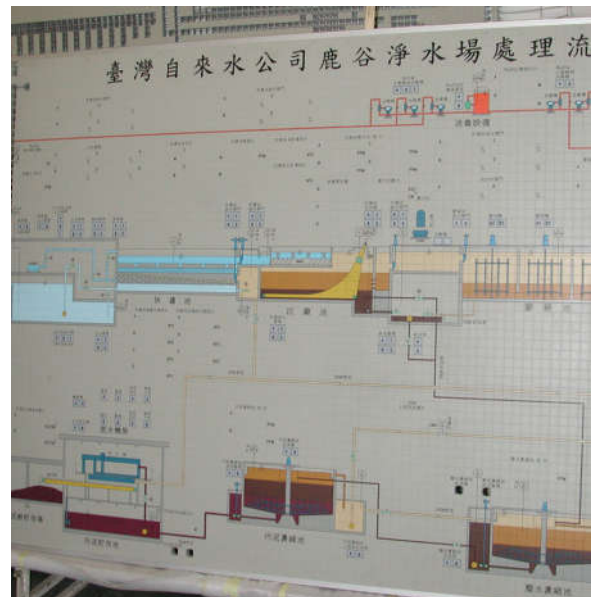
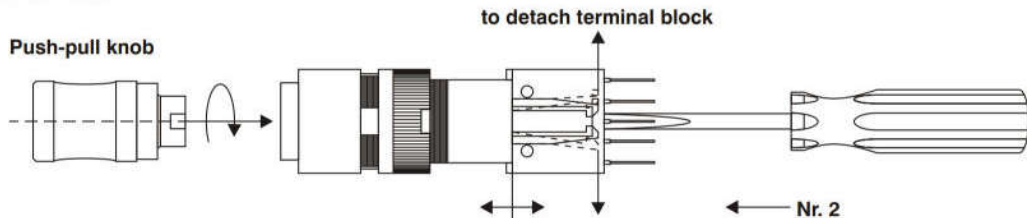
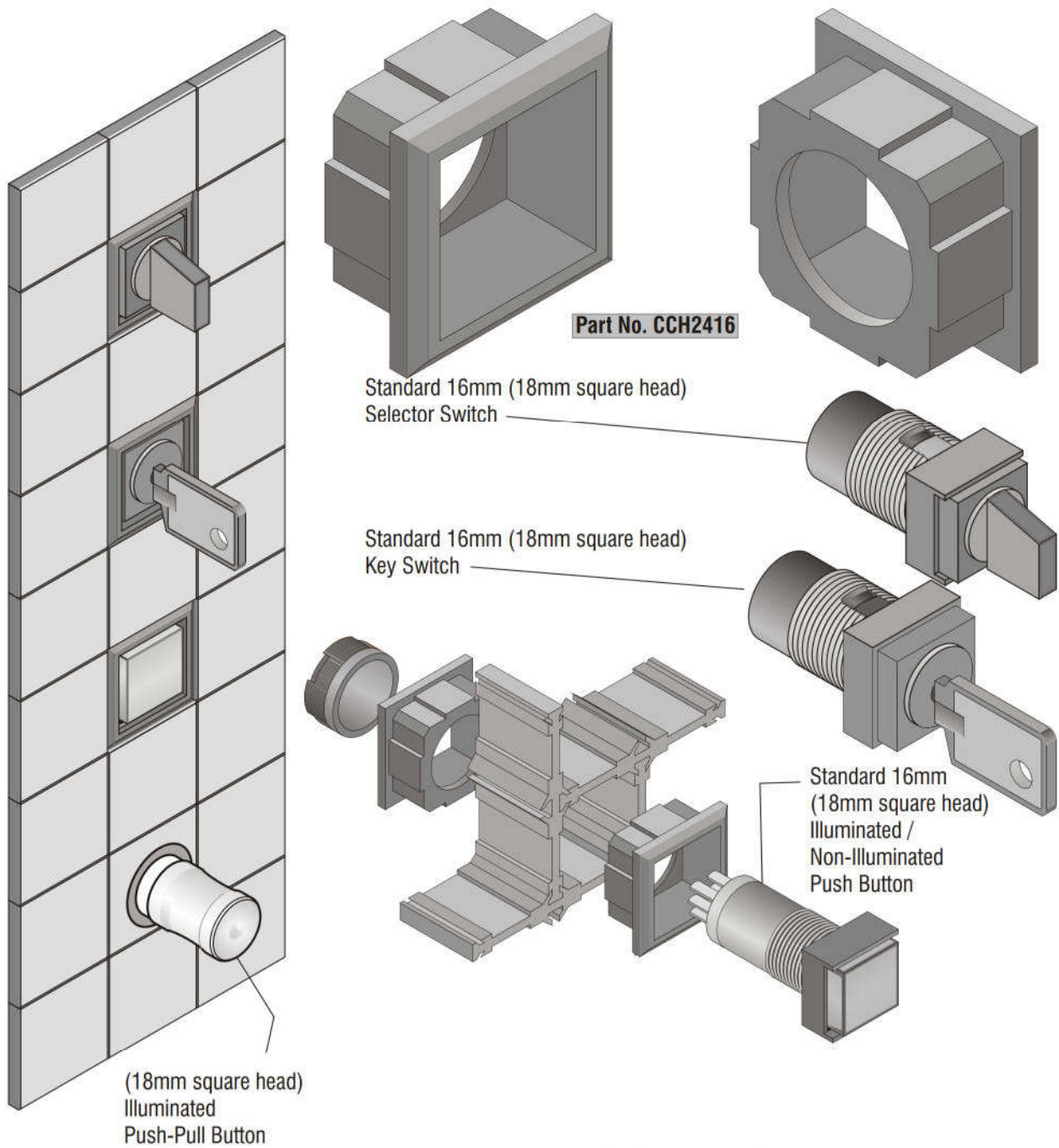


Fig. I shows graphic versatility on mosaic mimic panels using colour infill and grammatical font.

FLUSHFIT CONTROL COMPONENTS IN MIMIC

This adaptor allows standard 16mm components to be used with our Mimics, this is a big advantage for future replacement parts, as there are many manufactures of these. And they are all made to the same size and fitting.



Mounting Instructions

N.B. Push-pull knob can be mounted in only one position

The switch is mounted in a fascia or control panel in three steps:

1. Detach terminal block as in drawing, remove fixing nut.
2. Insert switch in fascia/control panel.
3. Reassemble the switch in the reverse order.

ORDER No. 200- -00

Colour:	225	Red
	245	Green
	255	Blue
	265	White
	275	Yellow

NOTE :This sheet shows typical 16mm components which fit into the system with adaptors. For full specification of individual items, see the relevant data sheet.

A particular advantage of the Mimic Crafts system is the flush fit adaptor. This prevents dust collecting on moving parts and in the case of key switches, they are securely held in place, and switch cannot be pulled out when key is removed



Above image shows Mimic's factory with a work-in-progress ALUTECH™ control desk and one of Mimic's Control Room Clocks above the wall.



Above shows Mimic Group of Companies