



POWER QUALITY METER PREMIUM POWER & ENERGY

PQM 16+ M1

APPLICATIONS

Control & Relay Panel

Original Equipment

Manufacturers (OEMs)

Energy Management System

DG Set Panels

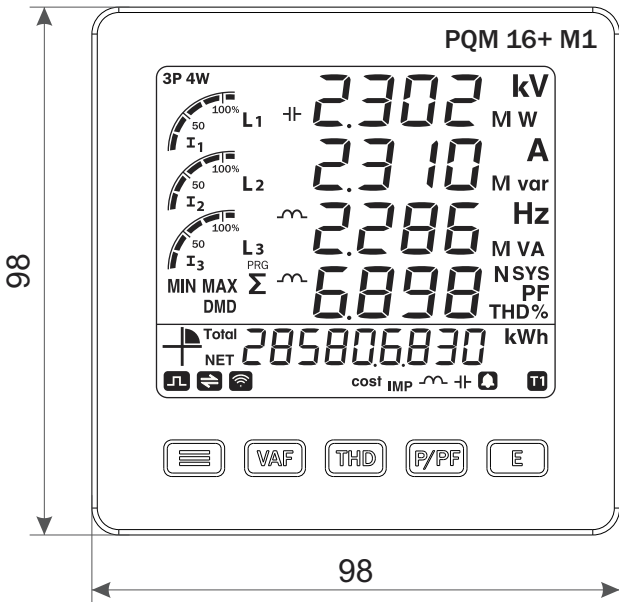
LT / HT Panel

Power Control Center Panels

Motor Control Center Panels

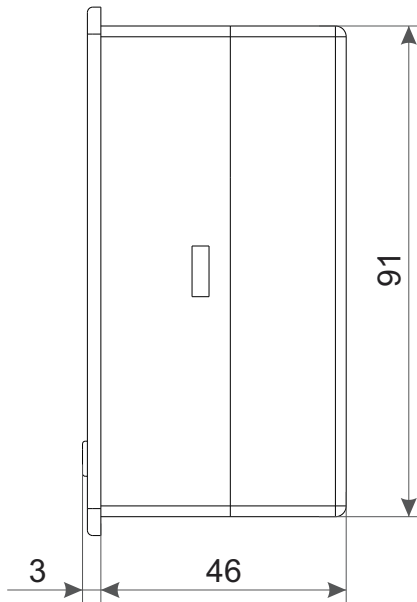
Mechanical Dimensions

Body Dimensions



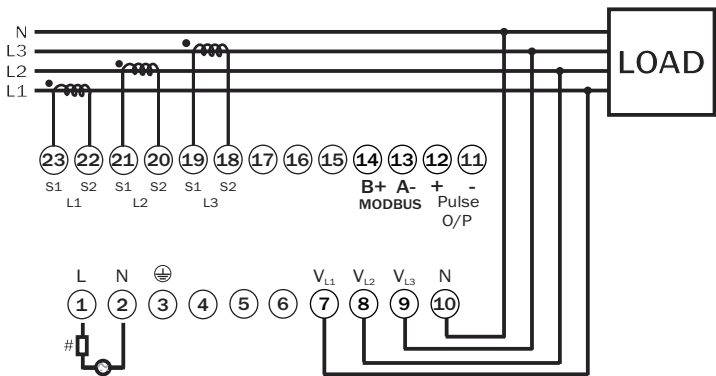
FRONT VIEW

All dimensions are in mm

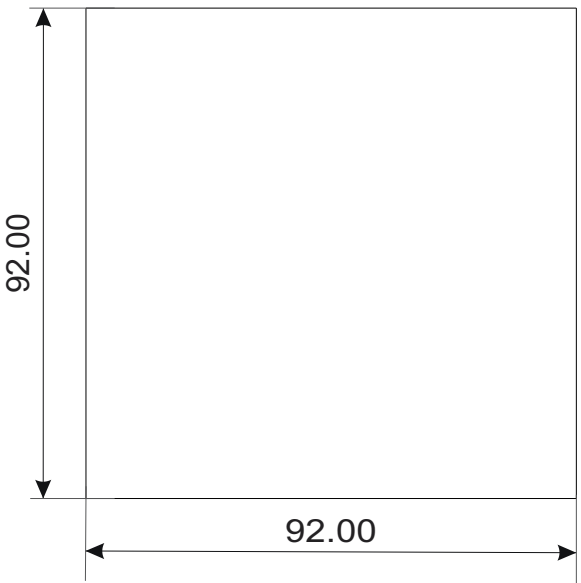


RIGHT SIDE VIEW

Connection Diagram



Panel Cutout



TECHNICAL DATA

Proper conclusion about energy consumption and power quality can only be made through measurements that extend beyond the feed point. To locate disturbances or energy wasters, data must be recorded at multiple points in the network, the granularity (resolution) of the measurement is key. The new PQM series is an ideal solution for this task. It is suitable for measuring and controlling electrical variables, energy consumption as well as monitoring the power quality parameters, such as harmonics. It is used in energy distribution systems, for example, to record cost centres and monitor thresholds.

Harmonics Measurement

- THD measurement For Voltage And Current, Up to 32 Harmonic.
- Individual Harmonics up to 32 order For Voltage.
- Individual Harmonics up to 32 order For Current.

Demand Measurement

- For Active Power.
- For Apparent Power.
- Display Of Minimum and Maximum Values.

Complete Energy Measurement


- Import Active Energy.
- Export Active Energy.
- NET Active Energy.
- Total Active Energy.
- Total Apparent Energy.
- Import Reactive Energy.
- Export Reactive Energy.
- Lag & Lead Reactive Energy.
- Total Reactive Energy.

Data Logging

- 30 Days for 43 Parameters @30 Minute Integration Period

Meter Type	
1Φ 2W / 3Φ 4W / 3Φ 3W (Selectable)	

Measurement Accuracy	
Accuracy Class	0.5

Input	
Voltage	
Direct Voltage	30 To 350V AC (L-N) 50 To 600V AC (L-L)
Current	
Secondary Current AC	10mA to 5Amp AC
Primary PT	100V to 520KV
Secondary PT	100V to 520V
Primary CT	Up to 9999A
Secondary CT	By 5A/1A
Voltage THD%	Upto 32 Level
Current THD%	Upto 32 Level
Certification	

Output	
Pulse Output (Optional)	Voltage :- External 24V DC Current Capacity :- 25mA Pulse width :- 50 to 500ms
Communication Output RS-485 (Optional)	
Interface	RS-485
Baud Rate	2400, 4800, 9600, 19200, 38400
Parity	None, Odd, Even
Protocol	Modbus - RTU
Transmission Distance	500 Meter Maximum
Communication address	1 to 125

Display & Keys	
LCD with Backlight, 4 Row 8 Digit for Energy Display Bargraph Representation for current	
Key	PRG, VAF, THD, P/PF, E

Environmental Characteristics	
Working Temperature	0 to 55 °C
Storage Temperature	0 to 55 °C
Relative Humidity	95% RH Non-condensing
Warm up time	5 minutes

Auxiliary Power Supply	
Power Supply	100 to 300V AC/DC , 50/60Hz
Burden	3VA

Mechanical Characteristics	
Mounting Type	Panel Mount
Dimension (HxWxD) mm	98 x 98 x 46
Panel Cutout (HxW) mm	92 x 92
Material	Body Polycarbonate (PC)
Terminal Screw Size	M3
Screw Torque (N.m)	1
Wire Gauge (AWG)	28-12
Weight (Approx) gms	Unpacked : 225 Packed : 280
Accessories	1 Pair of Mounting Clamps

Real Time Clock	
Displays Date & Time	